

生产设备 Production Equipment



卧式加工中心1000 × 1000
(Horizontal Machining Center)



数控机床
(CNC Machine)



立式钻床
(Drilling Machine)



CNC卧式车床 φ1600
(CNC Horizontal machine)



立式加工中心1500 × 1000 × 800
(Vertical Machining Center)



研磨机
(Lapping)



超精磨床
(Grinding Machine)



清洗喷漆设备
(Painting Equipment)

质量控制 Quality Control



涂层测厚仪
(Coating Thickness Measurer)



手提式布氏硬度检测
(Portable Brinell Hardness Test)



MT磁粉探伤
(Metal Analysis)



专业螺纹测量工具
(GAGEMAKER Measurement Tools)



高压水密封、气密封试
(High Pressure Test)



超声波探伤
(Ultrasonic Test)



金属分析光谱仪
(Metal Analysis Spectrometer)



拉伸试验机
(Tensile Tester)



布洛维光学硬度计
(HBRVU Hardness Tester)



低温冲击试验机
(Low-temperature Impact Tester)



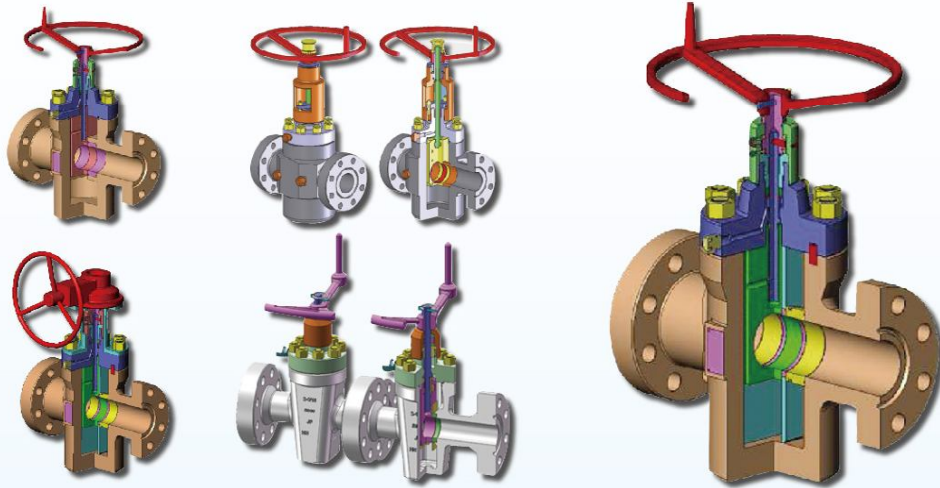
高压试验控制房
(High Pressure Test Controlling room)



RTJ槽尺寸检查
(RTJ Dimensional Verification)

阀门系列 P05~P20 | 闸阀

API 6A VALVE SERIES | GATE VALVE



其他阀门

OTHER VALVE



RANGE OF API 6A GATE VALVE

- Size: 1-13/16" ~ 7-1/16"
- Pressure: 2000 PSI ~ 15000 PSI
- Product Specification Level: PSL 1 ~ PSL 3
- Performance Requirement Level: PR1, PR2
- Temperature Ratings:

Temperature Ratings	Ranges(°F)		Ranges(°C)	
	K	-75	180	-60
L	-50	180	-46	82
N	-50	140	-46	60
P	-20	180	-29	82
S	0	140	-18	60
T	0	180	-18	82
U	0	250	-18	121
V	35	250	2	121

Optional Material Class:

Materials Classification	Service Conditions	Body		Bonnet	Bonnet Gasket	Gate	Seat	Stem
		Forging	Casting					
AA	General Service Standard Trim Non-Corrosive	API 60k or 75k Low Alloy	API 60k Low Alloy	API 60k or 75k Low Alloy	SS 304 or SS 316	4130 (2)/(3)/(4)	SS 410 (3)/(4) or Stellite 6	SS 410
BB	General Service Stainless Trim Slightly Corrosive	API 60k or 75k Low Alloy	API 60k Low Alloy	API 60k or 75k Low Alloy	SS 304 or SS 316	SS 410 (3)/(4)	Stellite 6	SS 410(1) or 17-4PH
CC	General Service Full Stainless Trim Moderately Corrosive	SS 410	A217-CA15	SS 410	SS 304 or SS 316	SS 410 (2)/(3)	Stellite 6	SS 410(1) or 17-4PH
DD	Sour Service Standard Trim Non-Corrosive	API 60k or 75k Low Alloy	API 60k Low Alloy	API 60k or 75k Low Alloy	SS 304 or SS 316	4130 (2)/(3)	SS 410 (2)/(3) or Stellite 6	SS 410(1) or 17-4PH
FF	Sour Service Stainless Trim Moderately Corrosive	API 60k(5) or 75k Low Alloy	API 60k Low Alloy	API 60k(5) or 75k Low Alloy	SS 304 or SS 316	SS 410 (2)/(5)	Stellite 6	17-4PH
EE	Sour Service Full Stainless Trim Highly Corrosive	SS 410 (5)	A217-CA15	SS 410 (5)	SS 304 or SS 316	SS 410 (2)/(5)	Stellite 6	17-4PH
HH	Sour Service Corrosion Resistant Alloy Highly Corrosive	Low Alloy W/625 Claded	-----	Low Alloy W/625 Claded	Inconel 825/625	Inconel 718/625 (2)	Inconel 718/625 (2)	Inconel 718/625

- Note: 1、Surface Hardened
 2、Hard-faced(stellite #6 or colomonoy #5)
 3、Nitrided
 4、Electroless Nickel Plating
 5、235BHN Maximum

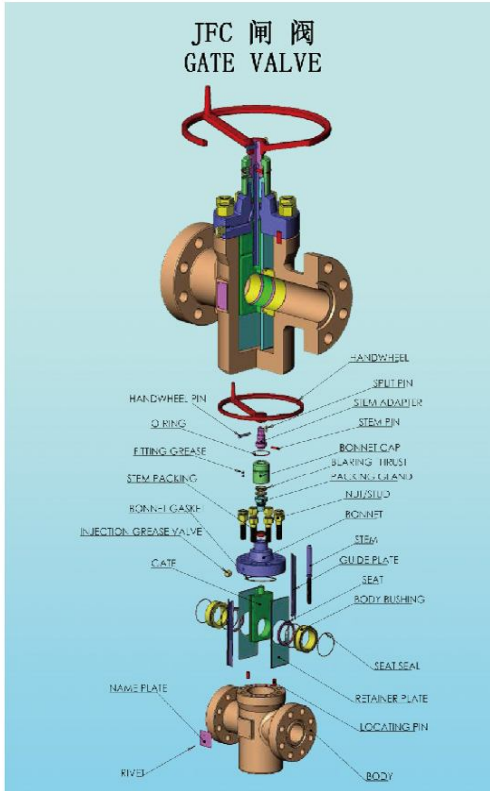
- 6、Charpy v-notch Impact Test will be proceeded according to API temperature and material level
 7、Trim materials can be changed upon customer's requirement

阀门系列 | JFC型闸阀 [1-13/16" ~ 7-1/16" 2000 PSI ~ 15000 PSI]

API 6A VALVE SERIES | JFC Gate Valve

Design Features

- The threaded packing retainer allows the replacement of the bearings or the stem pin while the valve is underpressure by holding the stem packing inside the stuffing box.
- The grease injection port permits lubrication of the gate and seat assembly and is used to vent trapped body pressure after stem backseat.
- The body and trim materials is available to fit operating condition refer to the gate valve trims chart.
- The handwheel should be backed off 1/4 turn after the valve is fully closed.
- Two thrust bearings with high-load capacity absorb the opening or closing loads of the gate reducing the turning effort to a minimum.
- The stem pin protects the stem and other internal parts from failure by shearing if a high overload torque is accidentally applied to the handwheel.
- The shoulder on the stem can be seated against the bonnet flange to seal off the stuffing box. Permitting the replacement of the stem packing while the valve is under pressure.
- The gate and seat assembly can be easily



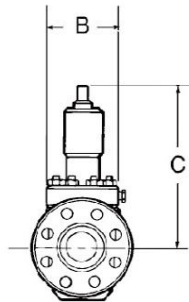
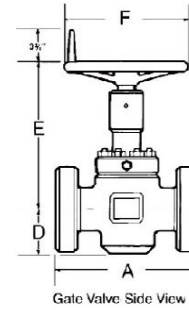
and quickly replaced without special tools.

- The gate construction helps preventing line sediment from entering the body cavity and also prevents pressure locks when the upstream pressure is reduced to zero.

阀门系列 | JFC型闸阀 [1-13/16" ~ 7-1/16" 2000 PSI ~ 15000 PSI]

API 6A VALVE SERIES | JFC Gate Valve

Dimension in inch

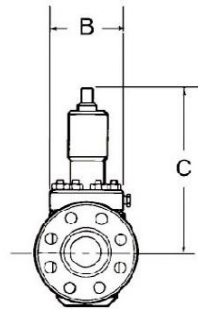
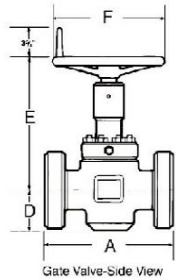


DIMENSIONS		SIZES							
		113/16	2 1/16	2 9/16	3 1/16	3 1/8	4 1/16	5 1/8	7 1/16
A-End to End	3000 psi Screwed		10 5/8	12 3/8		13 5/8			
	3000 psi Flanged		14 5/8	16 5/8		17 1/8	20 1/8		
	5000 psi Screwed		10 5/8	12 3/8		13 5/8			
	5000 psi Flanged		14 5/8	16 5/8		18 5/8	21 5/8		
	10000 psi Flanged	18 1/4	20 1/2	22 1/4	24 3/8		26 3/8	29 1/4	35 3/8
B-Extreme Width Of Body	15000 psi Flanged	18	19	21	23 5/9		29	35 3/8	
	3000 psi Flanged		6 3/4	7 5/8		7 1/2	10 1/2		
	5000 psi Flanged		7	8 1/5		9 1/4	10 4/5		
C-Center of Bore To Top of Stem Adapter	10000 psi Flanged	9 1/9	9 3/8	9 4/5	10 1/4		12 4/5	15 1/4	18 4/5
	15000 psi Flanged	9 7/8	9 7/8	11 1/2	13 5/9		15 3/8	16 3/8	19 4/5
	3000 psi Flanged		13	15 4/5		16 4/5	18 4/9		
D-Center of Bore To Bottom of Body	5000 psi Flanged		15 1/8	15 8/9		16 4/5	18 4/9		
	10000 psi Flanged	15 1/8	15 1/8	15 4/5	16 7/8		19 2/3	22	30 1/2
	15000 psi Flanged	15 1/8	15 1/8	17 1/5	20 8/9		22 4/5	22 4/5	31
E-Center of Bore To Top of Handwheel	3000 psi Flanged		5 5/8	6 1/2		7 3/8	9 1/8		
	5000 psi Flanged		5 5/8	6 1/2		7 3/8	9 1/8		
	10000 psi Flanged	5 3/4	5 7/8	6 4/5	8 1/9		10 1/9	12 1/2	16 3/8
F-Handwheel O.D.	15000 psi Flanged	5 7/8	6 1/8	7 1/3	9 1/4		10 1/5	13 4/5	17 3/8
	3000 psi Flanged		15 3/8	16 1/8		19 1/9	20 2/3		
	5000 psi Flanged		17 3/8	18 1/8		19 1/9	20 2/3		
G-No of Turns Open or Close	10000 psi Flanged	17 3/8	17 3/8	18 1/8	8 1/9		20 8/9	26	34 3/8
	15000 psi Flanged	17 3/8	17 3/8	19 5/9	22 1/5		24 1/9	26 4/5	35 1/2
	3000 psi Flanged		14	14		14	18 1/2		
Ring Number	5000 psi Flanged		14	14		18 1/2	18 1/2		
	10000 psi Flanged	14	18 1/2	18 1/2	24		24	24 1/2	33
	15000 psi Flanged	18 1/2	18 1/2	18 1/2	24		24	24 1/2	34 1/4
Weight	3000 psi Flanged		12 1/2	15 1/4		18 1/4	23 1/2		
	5000 psi Flanged		12 1/2	15 1/4		18 1/4	23 1/2		
	10000 psi Flanged	12 1/2	12 1/2	15 1/4	18 1/4		23 1/2		
Weight	15000 psi Flanged	12 1/2	12 1/2	15 3/4	18 1/4		29 1/4		
	3000 psi Flanged		R-24	R-27		R-31	R-37		
	5000 psi Flanged		R-24	R-27		R-35	R-39		
	10000 psi Flanged	BX-151	BX-152	BX-153	BX-154		BX-155	BX-169	BX-156
	15000 psi Flanged	BX-151	BX-152	BX-153	BX-154		BX-155	BX-169	BX-156
	3000 psi Screwed		130lb	185lb		210lb			
Weight	3000 psi Flanged		180lb	249lb		282lb	450lb		
	5000 psi Screwed		130lb	190lb					
	5000 psi Flanged		182lb	255lb		360lb	545lb		
	10000 psi Flanged	270lb	275lb	485lb	680lb		1057lb	1588lb	2100lb
	15000 psi Flanged	275lb	350lb	800lb	1065lb		1300lb	3214lb	5000lb

阀门系列 | JFC型闸阀 [1-13/16" ~ 7-1/16" 2000 PSI ~ 15000 PSI]

API 6A VALVE SERIES | JFC Gate Valve

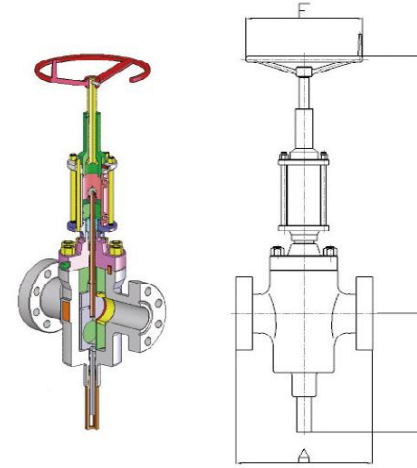
Dimension in mm



DIMENSIONS			SIZE									
			1 13/16	2 1/16	2 9/16	3 1/16	3 1/8	4 1/16	5 1/8	7 1/16		
A-End to End	3000 psi	Screwed		269.9	341.2		346.1					
	3000 psi	Flanged		371.5	422.3		435.0	511.2				
	5000 psi	Screwed		269.9	341.2		346.1					
	5000 psi	Flanged		371.5	422.3		473.1	549.3				
	10000 psi	Flanged	469.9	520.7	565.2	619.1		669.9	737.0	889.0		
B-Extreme Width Of Body	15000 psi	Flanged	457.2	482.6	533.4	598.5		736.6	889.0			
	3000 psi	Flanged		171.5	193.7		190.5	266.7				
	5000 psi	Flanged		177.8	208.0		235.0	274.6				
C-Center of Bore To Top of Stem Adapter	10000 psi	Flanged	230.2	238.1	249.2	260.4		325.4	388.0	476.0		
	15000 psi	Flanged	250.8	250.8	292.1	344.5		390.5	418.0	505.0		
	3000 psi	Flanged		330.2	401.6		427.0	468.3				
D-Center of Bore To Bottom of Body	5000 psi	Flanged		384.2	401.6		427.0	468.3				
	10000 psi	Flanged	384.2	384.2	401.6	428.6		500.1	560.0	776.0		
	15000 psi	Flanged	384.2	384.2	436.6	531.8		579.4	576.0	789.0		
E-Center of Bore To Top of Handwheel	3000 psi	Flanged		142.9	165.1		187.3	231.8				
	5000 psi	Flanged		142.9	165.1		187.3	231.8				
	10000 psi	Flanged	146.1	149.2	173.0	204.8		255.6	315.0	416.0		
F-Handwheel O.D	15000 psi	Flanged	149.2	155.6	185.7	235.0		258.8	351.0	440.0		
	3000 psi	Flanged		390.5	409.6		484.2	525.5				
	5000 psi	Flanged		441.3	460.4		484.2	525.5				
G-No of Turns Open or Close	10000 psi	Flanged	441.3	441.3	460.4	458.8		531.8	662.0	873.0		
	15000 psi	Flanged	441.3	441.3	496.9	563.6		611.2	681.0	902.0		
	3000 psi	Flanged		355.6	355.6		355.6	469.9				
Ring Number	5000 psi	Flanged		355.6	355.6		469.9	469.9				
	10000 psi	Flanged	355.6	469.9	469.9	609.6		609.6	622.0	840.0		
	15000 psi	Flanged	469.9	469.9	469.9	609.6		609.6	622.0	870.0		
Weight	3000 psi	Flanged		315.0	388.0		469.9	596.9				
	5000 psi	Flanged		315.0	388.0		469.9	596.9				
	10000 psi	Flanged	315.0	315.0	388.0	469.9		596.9				
Weight	15000 psi	Flanged	315.0	315.0	388.0	388.0		743.0				
	3000 psi	Flanged		R-24	R-27		R-31	R-37				
	5000 psi	Flanged		R-24	R-27		R-35	R-39				
Weight	10000 psi	Flanged	BX-151	BX-152	BX-153	BX-154		BX-155	BX-169	BX-156		
	15000 psi	Flanged	BX-151	BX-152	BX-153	BX-154		BX-155	BX-169	BX-156		
	3000 psi	Screwed		130lb	185lb		210lb					
Weight	3000 psi	Flanged		180lb	249lb		282lb	450lb				
	5000 psi	Screwed		130lb	190lb							
	5000 psi	Flanged		182lb	255lb		360lb	545lb				
Weight	10000 psi	Flanged	270lb	275lb	485lb	680lb		1057lb	1588lb	2100lb		
	15000 psi	Flanged	275lb	350lb	800lb	1065lb		1300lb	3214lb	5000lb		

阀门系列 | 液动平板闸阀 [1-13/16" ~ 7-1/16" 2000 PSI ~ 15000 PSI]

API 6A VALVE SERIES | JFC-H Hydraulic Gate Valve



The valve is available with an optional manual closing and locking screw.

The adjusting nut in the bind cylinder head absorbs the overload or testing pressure applied to the opening side of the valve, protecting the stem from overload.

The cylinder ports are located a sufficient distance from the cylinder head to allow the piston cover the exhaust port before the end of the stroke. This arrangement provides enough damping to protect the cylinder from shock loading.

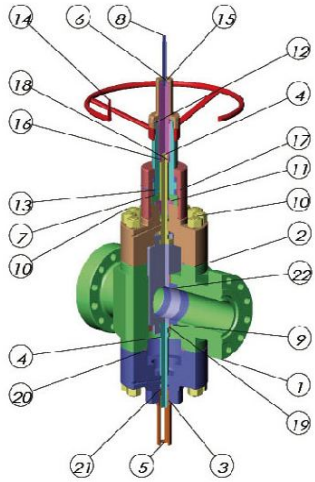
The overload or testing pressure applied to the closing side of the cylinder are absorbed when the piston bottoms out against the packing gland of the stem.

The tail rod and the operating stem have backseat shoulders which allow replacement of the stem packing while the valve is under pressure.

DIMENSIONS		SIZE								
		1 13/16	2 1/16	2 9/16	3 1/16	3 1/8	4 1/16	5 1/8	7 1/16	
A-End to End	5000 psi Flanged		371.5	422.0		473.0	549.0			
	10000 psi Flanged	464.0	521.0	565.0	619.0		670.0	737.0	889.0	
	15000 psi Flanged	457.0	483.0	533.0	598.0		737.0	889.0		
B-Flange Of Body	5000 psi Flanged		215.0	245.0		265.0	310.0			
	10000 psi Flanged	185.0	200.0	230.0	270.0		315.0	388.0	476.0	
	15000 psi Flanged	210.0	220.0	255.0	290.0		360.0	418.0	505.0	
D-Center of Bore To Bottom of Body	5000 psi Flanged		358.0	405.0		425.0	505.0			
	10000 psi Flanged	361.0	361.0	405.0	430.0	438.0	512.0	600.0	814.0	
	15000 psi Flanged	361.0	368.0	416.0	523.0		615.0	830.0		
E-Center of Bore To Top of Handwheel	5000 psi Flanged		939.0	939.0		1060.0	1196.0			
	10000 psi Flanged		942.0	942.0	1090.0		1278.0	1320.0	1540.0	
	15000 psi Flanged		942.0	1080.0	1250.0			1320.0	1540.0	
F-Handwheel O.D	5000 psi Flanged		356.0	356.0		470.0	470.0			
	10000 psi Flanged	356.0	470.0	470.0	609.6		609.6	622.0	840.0	
	15000 psi Flanged	470.0	470.0	470.0	609.6		609.6	622.0	870.0	
Ring Number	5000 psi Flanged		R-24	R-27		R-35	R-39			
	10000 psi Flanged	BX-151	BX-152	BX-153	BX-154		BX-155	BX-169	BX-156	
	15000 psi Flanged	BX-151	BX-152	BX-153	BX-154		BX-155	BX-169	BX-156	

阀门系列 | 滚球丝杆闸阀 [4-1/16" ~ 7-1/16", 10000 PSI ~ 15000 PSI]

API 6A VALVE SERIES | JFC-B Ball Screw Gate Valve



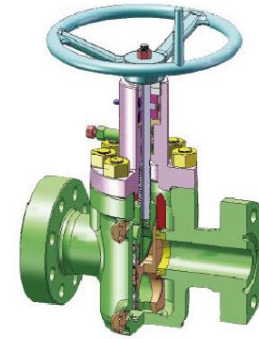
Item No.	Parts Name		
1	Body	4130	1
2	Upper Bonnet	4130	1
3	Lower Bonnet	4130	1
4	Stem/Gate	410/4130+HF5#	1
5	Lower Stem Protector	4130	1
6	Ball Screw	Gr15/316	1
7	Bearing Housing	4130	1
8	Indicating Adapter	316	1
9	Seat	410+HF5#	2
10	Stud/Nut	B7/2H	24
11	Gland	4130	1
12	Bearing Nut	Assembly Parts	1
13	Bearing	Assembly Parts	2
14	Handwheel	1035	1
15	Upper Stem Protector	1035	1
16	Bonnet Cap	4130	1
17	O-Ring	Nitrile Rubber	1
18	Pin	1045	1
19	Gate Guide	1020	2
20	Gasket	316	2
21	Stem Packing	F4+Viton	2
22	Seat Seal Ring	F4+Graphite	2

DIMENSIONS		5 1/8	7 1/16
A-End to End	10000 psi Flanged	737	889
	15000 psi Flanged	889	
B-O.D of Body Flange	10000 psi Flanged	388	476
	15000 psi Flanged	418	505
D-To Bottom of Body	10000 psi Flanged	600	814
	15000 psi Flanged	615	830
E-To Top of Stem Adapter	10000 psi Flanged	560	776
	15000 psi Flanged	576	789
F-Handwheel O.D	10000 psi Flanged	622	840
	15000 psi Flanged	622	870
Ring Number	10000 psi Flanged	BX-169	BX-156
	15000 psi Flanged	BX-169	BX-156
	10000 psi Flanged	1588	2100
Weight	10000 psi Flanged	1588	2100
	15000 psi Flanged	3214	5000

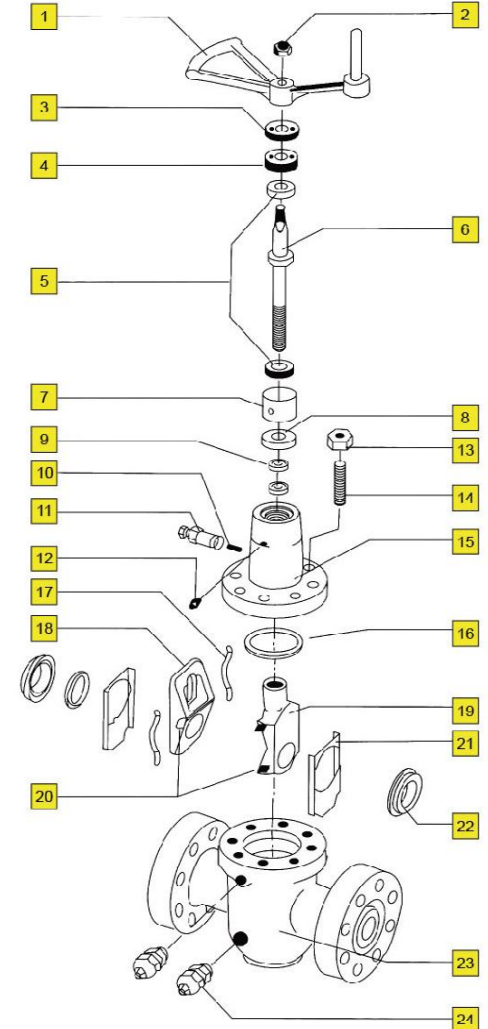


系列 | 扩张式闸阀 [1-13/16" ~ 7-1/16", 2000 PSI ~ 15000 PSI]

JA VALVE SERIES | JM Expanding Gate Valve

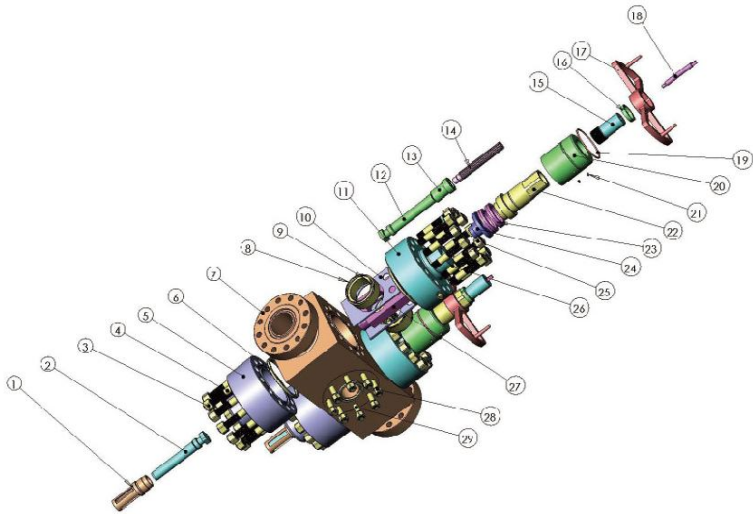


Item	Description
1	Handwheel
2	Handwheel Nut
3	Lock Nut
4	Retainer Nut
5	Thrust Bearing
6	Stem
7	Spacer Sleeve
8	Retainer Bushing
9	Packing
10	Plastic Packing
11	Packing Fitting
12	Grease Fitting
13	Bonnet Stud Nut
14	Bonnet Stud
15	Bonnet
16	Bonnet Gasket
17	Spring
18	Segment Gate
19	Gate
20	Pin
21	Gate Guide
22	Seat
23	Body
24	Body Grease Fitting



阀门系列 | 组合闸阀 [5-1/8" ~ 7-1/16", 10000 PSI ~ 15000 PSI]

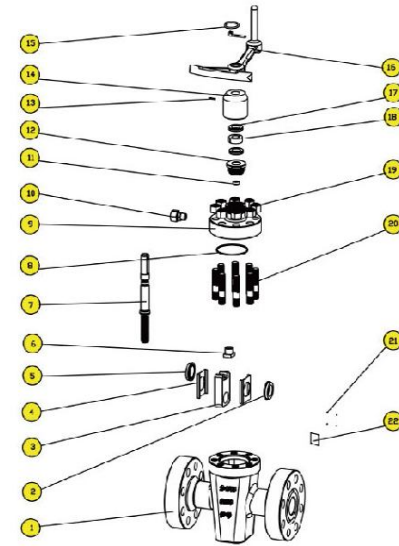
API 6A VALVE SERIES | ZPF Combined Gate Valve



Item No.	Parts Name	Material	QTY
1	Lower Stem Protector	30CrMo	2
2	Lower Stem	17-4PH	2
3	Nut	ASTM A194 2HM	24
4	Stud	ASTM A320 L7M	24
5	Lower Bonnet	30CrMo	2
6	Valve Bonnet Seal Ring	316	4
7	Body	30CrMo	1
8	Seat Seal Ring	F4+Graphite	4
9	Seat	1Cr13+6#	4
10	Retainer Plate	1020	4
11	Upper Bonnet	30CrMo	2
12	Upper Stem	17-4PH	2
13	Connecting Sleeve	4130	1
14	Ball Screw	GCr15	2
15	Upper Stem Protector	1035	1
16	Lock Nut	1045	2
17	Handwheel	QT-400-18	1
18	Indicating Stem	316	2
19	O-Ring	Buna-N	2
20	Bonnet Cap	30CrMo	2
21	Grease Fittin	Steel	4
22	Ball Screw Protector	30CrMo	2
23	Bearing		4
24	Packing Gland	30CrMo	2
25	Nut	ASTM A194 2HM	24
26	Stud	ASTM A320 L7M	24
27	Gate	1Cr13+TC	2
28	Nut	ASTM A194 2HM	16
29	Stud	ASTM A320 L7M	16

阀门系列 | T型闸阀 [2-1/16" ~ 4-1/16", 2000 PSI ~ 15000 PSI]

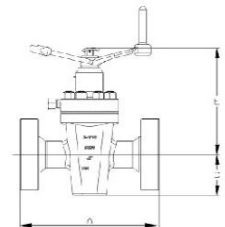
API 6A VALVE SERIES | JT Gate Valve



DIMENSION		SIZE			
		2 1/16	2 9/16	3 1/18	4 1/16
A-End to End	2000psi	295.0	333.0	359.0	435.0
	3000psi	371.0	422.0	473.0	511.0
	5000psi	371.0	422.0	473.0	549.0
B-Flange Of Body	2000psi	165.0	190.0	210.0	275.0
	3000psi	215.0	245.0	240.0	290.0
	5000psi	215.0	245.0	265.0	310.0
D-Center of Bore To Bottom of Body	2000psi	128.0	165.0	188.0	238.0
	3000psi	128.0	165.0	188.0	238.0
	5000psi	128.0	165.0	188.0	238.0
E-Center of Bore To Top of Handwheel	2000psi	450.0	470.0	485.0	525.0
	3000psi	450.0	470.0	485.0	525.0
	5000psi	450.0	470.0	485.0	525.0
F-Handwheel O.D	2000psi	300.0	356.0	380.0	470.0
	3000psi	300.0	356.0	380.0	470.0
	5000psi	300.0	356.0	380.0	500.0
Ring Number	2000psi	R-23	R-26	R-31	R-37
	3000psi	R-24	R-27	R-31	R-37
	5000psi	R-24	R-27	R-35	R-39

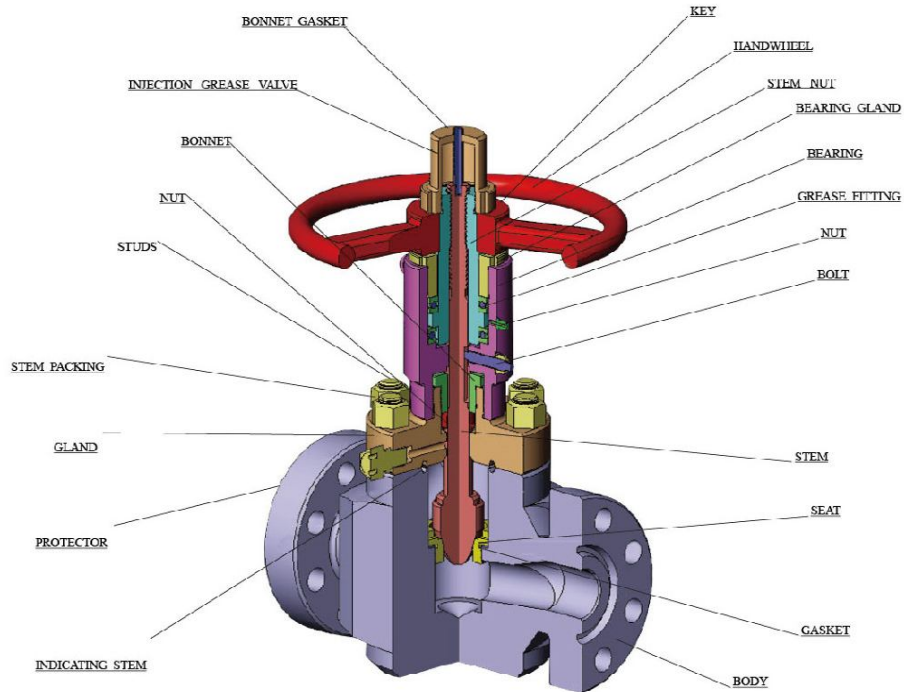


Item	Description
1	Body
2	Seat
3	Gate
4	Retainer Plate
5	Seat
6	Lift Nut
7	Stem
8	Bonnet Gasket
9	Bonnet
10	Lubrication
11	Ring
12	Packing Gland
13	Grease Fitting
14	Cap
15	Lock-Ring
16	Handwheel
17	Bearing
18	Stem Packing
19	Nut
20	Stud
21	Screw
22	Name Plate



阀门系列 | 截止阀 [2-1/16" ~ 7-1/16", 2000 PSI ~ 15000 PSI]

API 6A VALVE SERIES | Glove Valve

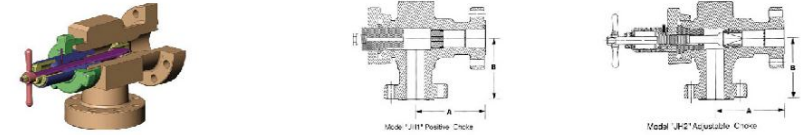


DIMENSION	SIZE							
	2 1/16	2 9/16	3 1/16	3 1/8	4 1/16	5 1/8	7 1/16	
A-End to End	3000psi	371.5	422.3		435.0	511.0	613.0	714.0
	5000psi	371.5	422.3		473.0	550.0	727.0	550.0
	10000psi	520.7	565.2	619.1		670.0	737.0	889.0
Ring Number	3000psi	R-24	R-27		R-31	R-37	R-41	R-45
	5000psi	R-24	R-27		R-35	R-39	R-44	R-46
	10000psi	BX-152	BX-153	BX-154		BX-155	BX-169	BX-156

阀门系列 | 固定式和可调式节流阀 [1-13/16" ~ 4-1/16", 2000 PSI ~ 10000 PSI]

API 6A VALVE SERIES | JH1 & JH2 Choke Valves

Model JH1 Positive Choke Valve and model JH2 Adjustable Choke Valve, the choke is ideally suited for using on high pressure choke and kill manifold. It features long life and low maintenance. Design and manufacturing are per API 6A NACE MR-01-75.



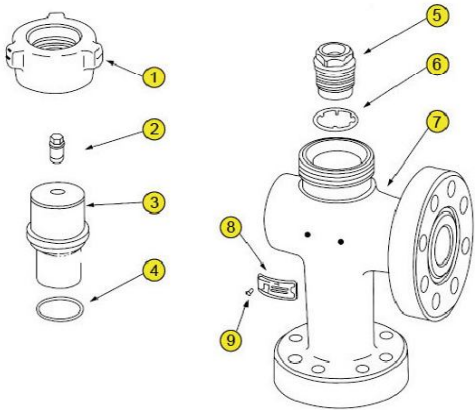
Inlet (in)	Outlet (in)	Working Pressure (psi)	Dimension ± 12h(3mm)				Weights					
			A		B		Positive		Adjustable			
			in	mm	in	mm	lb	kgs	lb	kgs		
1" Maximum Orifice												
1 13/16 API Flange	1 13/16 API Flange	10000	8 13/16	224	11/16	195	100	45	122	55		
		15000	9 5/8	245	15/32	215	180	82	205	93		
2 API Line Pipe	2 API Line Pipe	3000	4 9/16	116	3 7/16	87	65	30	78	35		
		5000										
2 1/16 API Flange	2 1/16 API Flange	2000	4 9/16	116	11/16	170	80	36	102	46		
		3000			6 7/8	175						
2 1/16 API Flange	2 1/16 API Flange	5000	4 9/16	116	6 7/8	175	80	36	102	46		
		2000			7 13/16	198					6 11/16	170
2 1/16 API Flange	2 1/16 API Flange	3000	4 9/16	116	8	203	6 7/8	175	100	45	122	55
		5000			8	203	6 7/8	175	100	45	122	55
2 1/16 API Flange	2 1/16 API Flange	10000	4 9/16	116	8 13/16	224	7 11/16	195	106	48	128	58
		15000			10 5/16	262	8 1/2	225	180	82	205	93
2 9/16 API Flange	2 9/16 API Flange	3000	2 9/16	210	6 15/16	176	106	48	128	58		
		5000			8 1/4	210	6 15/16	176	106	48	128	58
2 9/16 API Flange	2 9/16 API Flange	10000	2 9/16	210	9 5/16	237	386	208	112	51	134	61
		15000			11 3/4	298	10 1/2	167	185	84	207	94
3 1/8 API Flange	3 1/8 API Flange	3000	3 1/8	227	7 13/16	198	115	52	139	63		
		5000			9 9/16	243	9 11/16	246	115	52	139	63
3 1/16 API Flange	3 1/16 API Flange	15000	11 5/8	295	10 11/32	263	185	84	207	94		

2" Maximum Orifice

3 API Line Pipe	3 API Line Pipe	3000	7	178	4 1/2	114	125	57	157	71
		5000	7	178	8 7/8	225	150	68	182	83
2 1/16 API Flange	2 1/16 API Flange	5000	11 7/16	291	8 15/16	227	175	79	209	95
		10000	12	305	10 3/8	264	208	94	242	110
2 9/16 API Flange	2 9/16 API Flange	5000	11 3/4	299	8 7/8	225	178	81	212	96
		10000	11 3/4	299	10 3/8	264	203	92	237	108
3 1/8 API Flange	3 1/8 API Flange	2000					178	81	212	96
		3000	11 3/8	289	8 7/8	225	208	94	242	110
4 1/16 API Flange	4 1/16 API Flange	5000					208	94	242	110
		3000	11 5/8	295	10 3/8	264	252	114	284	129
4 1/16 API Flange	4 1/16 API Flange	5000	12 5/8	321	10 1/8	257	252	114	284	129
		10000	11 1/2	292	9 15/16	252	264	120	298	135
3 1/16 API Flange	3 1/16 API Flange	10000	11 3/4	299	10 3/8	264	231	105	265	120

阀门系列 | 固定式和可调式节流阀 [1-13/16" ~ 4-1/16", 2000 PSI ~ 10000 PSI]

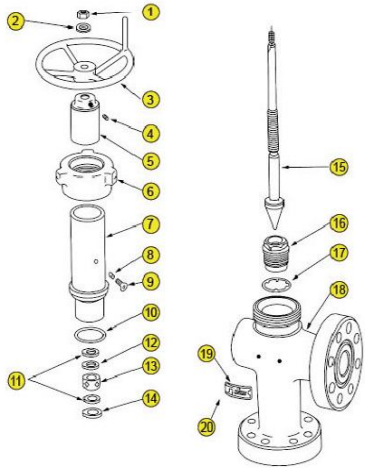
API 6A VALVE SERIES | JH1 & JH2 Choke Valves



Model "JH1" Positive Choke

Model JH1 Positive Choke

Item	Description
1	Donnet Cap
2	Plug-1/2"NPT
3	Bonnet
4	"O" Ring
5	Beent
6	Gasket
7	Body
8	Name plate
9	Name plate Screw



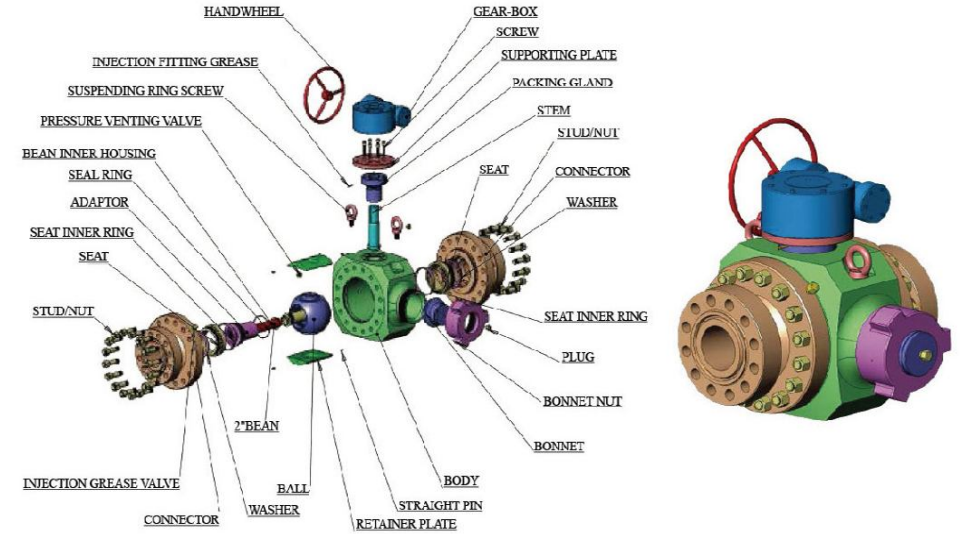
Model "JH2" Adjustable Choke

Model JH2 Adjustable Choke

Item	Description
1	Hex Nut
2	Washer
3	Handwheel
4	Set Screw
5	Indicator
6	Bonnet Cap
7	Bonnet
8	Plug
9	Screw
10	"O" Ring
11	Junk Ring
12	Back-Up Ring
13	Packing
14	Retainer Ring
15	Needle
16	Seat
17	Gasket
18	Body
19	Name plate
20	Name plate Screw

阀门系列 | 节流球阀 [1-13/16" ~ 4-1/16", 2000 PSI ~ 5000 PSI]

API 6A VALVE SERIES | JHB Choke Ball Valve



Pressure	2000、3000、5000、10000、15000PSI					
SIZE	1 13/16 TO 4 1/16					
TRIM	AA	BB	CC	DD	EE	FF
Body	4130	4130	410	4130	4130	410
Connector	4130	4130	410	4130	4130	410
Ball	4130	4130	410	4130	410	410
Bonnet nut	4130	4130	410	4130	4130	410
Bean	4130	4130	410	4130	4130	410
Seal						
Stem	4130	410	410	4130	17-4PH	17-4PH
Seat	Nitrile	Nitrile	viton	Nitrile	viton	viton

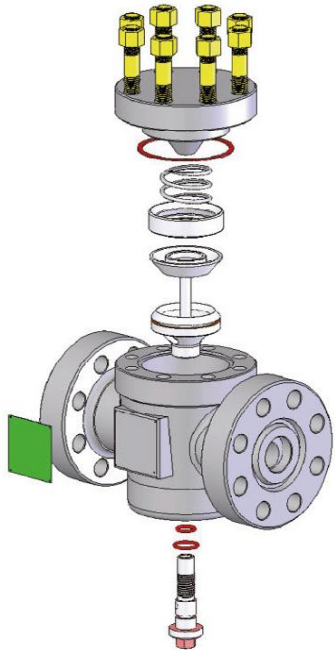
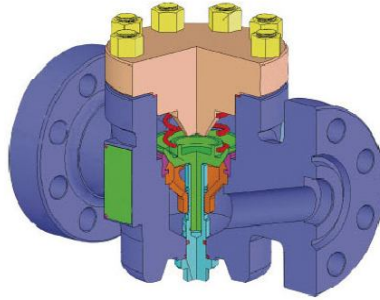
阀门系列 | 止回阀 [1-13/16" ~ 4-1/16", 2000 PSI ~ 5000 PSI]

API 6A VALVE SERIES | JR Check Valve

- The JR Check Valve is used primarily in high pressure mud choke manifolds and high pressure choke manifolds and Christmas tree injection and kill lines.

Features:

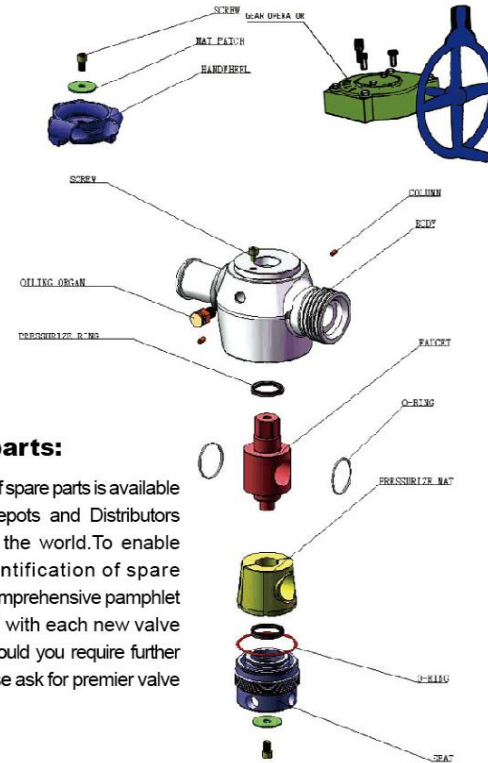
- TOP ENTRY for easy access to internal parts
- LONG WEARING internal parts available for regular and service
- OPERATES in any position
- AVAILABLE with Flanged Ends, Weld. Ends
- STANDARD Body, Bonnet, Seat, Spring are available in API standard trim AA, BB, CC, DD, EE, FF



Pressure	2000,3000,5000,10000,15000 PSI					
Size	13/16 TO-1/16					
Trim Material	AA	BB	CC	DD	EE	FF
Body	4130	4130	410	4130	4130	410
Bonnet Stud	B7	B7	B7	B7	B7	B7
Bonnet Nut	2H	2H	2H	2H	2H	2H
Bonnet	4130	4130	410	4130	4130	410
Bonnet Gasket	316	316	316	316	316	316
Spring	316	316	316	316	316	316
Seat	4130	410	410	4130	4130	410
Poppet	4130	410	410	4130	4130	410
Seal	nitrile	nitrile	viton	nitrile	viton	viton

阀门系列 | 旋塞阀 [1" ~ 2", 5000 PSI]

API 6A VALVE SERIES | JP Plug Valve



Spare parts:

A full range of spare parts is available from our Depots and Distributors throughout the world. To enable ease of identification of spare parts a comprehensive pamphlet is provided with each new valve delivered. Should you require further copies please ask for premier valve spare parts.

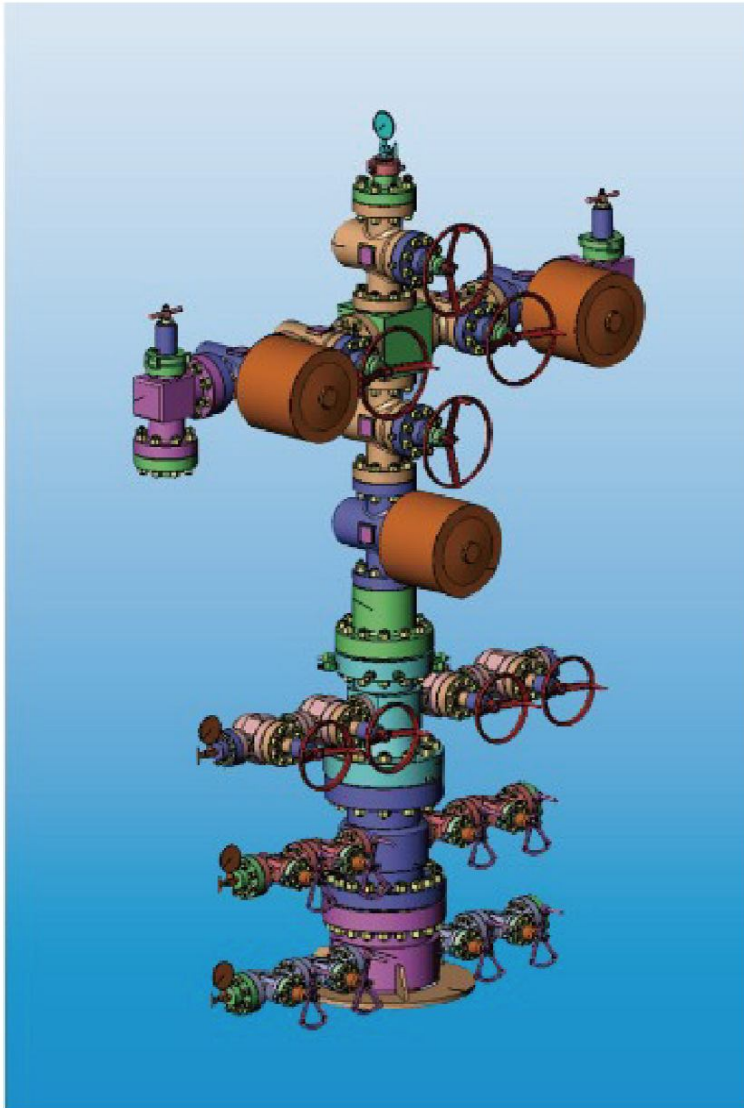
Connection	Line Pipe	API Tubing
Thread	1-1/2"	
	2"	2-3/8" EUE
	2-1/2"	2-7/8" EUE
	3"	3-1/2" EUE
Union	1502, 1002	



Servicing:

Regular servicing will ensure ease of operation and extend the working life of the valve. Each valve is delivered with fully illustrated step by step instructions on how to keep the valve in good working order. Should you require further copies of these instructions please ask for premier valve operating and service instruction.

采油（气）井口装置：P21~P32
Wellhead Equipment and Christmas Tree:



Casing Head

Casing head produced by JF mainly comprises JCH-22 and JCH-29, the two casing heads are designed with 45 degrees of main bearing shoulder for supporting casing column weight transferred by casing hanger, this design can prevent drilling tools from being wedged. The lateral outlet is a thread type, but connecting modes including a flange platform type (namely bolt type) an extending flange type, etc. Can be supplied according to demands. The casing head can be flexibly designed according to clients' demands and actual working conditions.

The depth of bearing shoulder of the JCH-29 casing head is bigger than the JCH-22, and is applicable to drill deeply after being assembled with the JCG-29 type casing hanger.

The casing Head has a general-purpose straight hole design, and various specifications of slip and mandrel casing hangers can be mounted. Symmetrical top threads can be designed for fixing the anti-corrosion sleeve and the suspender, the straight hole is designed with a 45 degrees of shoulder, the bearing capacity is big, the slip casing hanger and the mandrel casing hanger can be exchanged, and bottom connecting modes comprising slip bottom connection, thread bottom connection and welding bottom connection can be supplied.

JCH-22-BP/JCH-29-BP type casing head is provided with additional bolt locking device, and JCH-22-L/JCH-29-L type casing head is provided with the hanger locating locking device.

Basic Parameter

Working pressure: 2000PSI~15000PSI

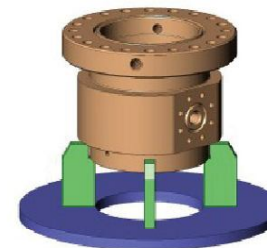
Working medium: petroleum, natural gas, mud, gas containing H₂S and CO₂

Working temperature: - 46℃~121℃ (LU class)

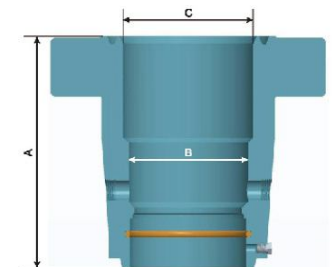
Material class: AA, BB, CC, DD, EE, FF, HH

Specification class: PSL1~4

Performance class: PR1~2



Bottom thread type casing head



JCH-22 / JCH-29 Casing Head

JCH-22 Casing Head Dimension

Flange Size	Working Pressure	Casing Size	A		B		C		Weight	
			in	mm	in	mm	in	mm	lbs	kg
9	2000	7	16 1/9	409	6 4/7	167	0 3/4	223	200	127
9	2000	7 5/8	16 1/9	409	7	179	8 3/4	223	285	129
9	2000	8 5/8	16 1/9	409	8 1/7	207	8 3/4	223	285	129
9	3000	7	17 1/7	436	6 1/2	165	8 3/4	223	370	168
9	3000	7 5/8	17 1/7	436	7	178	8 3/4	223	372	169
9	3000	8 5/8	17 1/7	436	8	202	8 3/4	223	375	170
9	5000	7	18 8/9	480	6 3/7	163	8 3/4	223	460	208
9	5000	7 5/8	18 8/9	480	6 8/9	176	8 3/4	223	455	206
9	5000	8 5/8	18 8/9	480	7 7/8	200	8 3/4	223	450	204
9	10000	7	19 3/8	492	6 2/9	158	8 3/4	223	545	247
9	10000	7 5/8	19 3/8	492	6 4/5	173	8 3/4	223	540	245
9	10000	8 5/8	19 3/8	492	7 3/4	197	8 3/4	223	530	240
11	2000	7	16 3/5	421	6 4/7	167	10 7/8	276	500	227
11	2000	7 5/8	16 3/5	421	7	179	10 7/8	276	458	208
11	2000	8 5/8	16 3/5	421	8 1/9	206	10 7/8	276	340	154
11	2000	9 5/8	16 3/5	421	8 8/9	227	10 7/8	276	320	145
11	2000	10 3/4	16 3/5	421	10	255	10 7/8	276	300	136
11	3000	7	16 2/9	412	6 1/2	165	10 7/8	276	510	231
11	3000	7 5/8	16 2/9	412	7	178	10 7/8	276	510	231
11	3000	8 5/8	16 2/9	412	8	202	10 7/8	276	460	209
11	3000	9 5/8	16 2/9	412	8 7/9	223	10 7/8	276	430	195
11	3000	10 3/4	16 2/9	412	10	255	10 7/8	276	410	186
11	5000	7	20 3/5	523	6 3/7	163	10 7/8	276	530	240
11	5000	7 5/8	20 3/5	523	6 8/9	176	10 7/8	276	775	351
11	5000	8 5/8	20 3/5	523	7 7/8	200	10 7/8	276	710	322
11	5000	9 5/8	20 3/5	523	8 5/7	221	10 7/8	276	680	308
11	5000	10 3/4	20 3/5	523	9 7/8	251	10 7/8	276	560	254
11	10000	7	20 3/7	519	6 2/9	158	10 7/8	276	670	303
11	10000	7 5/8	20 3/7	519	6 4/5	173	10 7/8	276	715	325
11	10000	8 5/8	20 3/7	519	7 3/4	197	10 7/8	276	890	403
11	10000	9 5/8	20 3/7	519	8 5/9	217	10 7/8	276	662	300
11	10000	10 3/4	20 3/7	519	9 3/4	248	10 7/8	276	655	297
13 5/8	2000	11 3/4	16 5/7	425	11 1/9	281	13 1/2	343	469	213
13 5/8	2000	13 3/8	16 5/7	425	12 5/8	321	13 1/2	343	380	172
13 5/8	3000	11 3/4	17 7/9	452	11	279	13 1/2	343	587	266
13 5/8	3000	13 3/8	17 7/9	452	12 1/2	318	13 1/2	343	500	227
13 5/8	5000	11 3/4	19 2/7	490	10 7/8	276	13 1/2	343	695	299
13 5/8	5000	13 3/8	19 2/7	490	12 3/8	314	13 1/2	343	750	340
13 5/8	10000	11 3/4	21 8/9	557	10 4/5	274	13 1/2	343	2840	1288
13 5/8	10000	13 3/8	21 8/9	557	12 3/8	314	13 1/2	343	2800	1270
20 3/4	3000	18 5/8	20 1/3	517	17 5/7	450	20 5/8	524	1480	671
20 3/4	3000	20	20 1/3	517	19 1/9	485	20 5/8	524	1331	604
21 1/4	2000	18 5/8	16 5/7	425	17 5/7	450	21 1/8	537	1310	594
21 1/4	2000	20	16 5/7	425	19 1/9	485	21 1/8	537	1210	549
21 1/4	5000	18 5/8	25	636	17 5/7	450	21 1/8	537	5180	2349
21 1/4	5000	20	25	636	19 1/9	485	21 1/8	537	5090	2308

JCH-29 Casing Head Dimension

Flange Size	Working Pressure	Casing Size	A		B		C		Weight	
			in	mm	in	mm	in	mm	lbs	kg
9	2000	7	19 8/9	505	6 4/7	167	8 3/4	223	350	159
9	2000	7 5/8	19 8/9	505	7	179	8 3/4	223	375	170
9	2000	8 5/8	19 8/9	505	8 1/7	207	8 3/4	223	390	177
9	3000	7	20 1/7	512	6 1/2	165	8 3/4	223	460	208
9	3000	7 5/8	20 1/7	512	7	178	8 3/4	223	485	220
9	3000	8 5/8	20 1/7	512	8	202	8 3/4	223	485	220
9	5000	7	20 8/9	531	6 3/7	163	8 3/4	223	550	249
9	5000	7 5/8	20 8/9	531	6 8/9	176	8 3/4	223	570	258
9	5000	8 5/8	20 8/9	531	7 7/8	200	8 3/4	223	570	258
9	10000	7	21 3/8	543	6 2/9	158	8 3/4	223	630	286
9	10000	7 5/8	21 3/8	543	6 4/5	173	8 3/4	223	645	293
9	10000	8 5/8	21 3/8	543	7 3/4	197	8 3/4	223	635	288
11	2000	7	20 2/7	515	6 4/7	167	10 7/8	276	590	267
11	2000	7 5/8	20 2/7	515	7	179	10 7/8	276	575	261
11	2000	8 5/8	20 2/7	515	8 1/9	206	10 7/8	276	490	222
11	2000	9 5/8	20 2/7	515	8 8/9	227	10 7/8	276	510	231
11	2000	10 3/4	20 2/7	515	10	255	10 7/8	276	610	277
11	3000	7	20 2/5	518	6 1/2	165	10 7/8	276	605	275
11	3000	7 5/8	20 2/5	518	7	178	10 7/8	276	650	295
11	3000	8 5/8	20 2/5	518	8	202	10 7/8	276	565	256
11	3000	9 5/8	20 2/5	518	8 7/9	223	10 7/8	276	545	247
11	3000	10 3/4	20 2/5	518	10	255	10 7/8	276	520	236
11	5000	7	22 3/5	573	6 3/7	163	10 7/8	276	650	295
11	5000	7 5/8	22 3/5	573	6 8/9	176	10 7/8	276	890	403
11	5000	8 5/8	22 3/5	573	7 7/8	200	10 7/8	276	780	354
11	5000	9 5/8	22 3/5	573	8 5/7	221	10 7/8	276	760	345
11	5000	10 3/4	22 3/5	573	9 7/8	251	10 7/8	276	745	338
11	10000	7	22 3/7	570	6 2/9	158	10 7/8	276	780	354
11	10000	7 5/8	22 3/7	570	6 4/5	173	10 7/8	276	820	372
11	10000	8 5/8	22 3/7	570	7 3/4	197	10 7/8	276	1100	499
11	10000	9 5/8	22 3/7	570	8 5/9	217	10 7/8	276	950	431
11	10000	10 3/4	22 3/7	570	9 3/4	248	10 7/8	276	950	431
13 5/8	2000	11 3/4	20 2/5	518	11 1/9	281	13 1/2	343	770	349
13 5/8	2000	13 3/8	20 2/5	518	12 5/8	321	13 1/2	343	690	313
13 5/8	3000	11 3/4	20 7/9	528	11	279	13 1/2	343	875	397
13 5/8	3000	13 3/8	20 7/9	528	12 1/2	318	13 1/2	343	800	363
13 5/8	5000	11 3/4	21 2/7	540	10 7/8	276	13 1/2	343	985	447
13 5/8	5000	13 3/8	21 2/7	540	12 3/8	314	13 1/2	343	1500	680
13 5/8	10000	11 3/4	22 1/3	608	10 4/5	274	13 1/2	343	3150	1429
13 5/8	10000	13 3/8	22 1/3	608	12 3/8	314	13 1/2	343	3150	1428
20 3/4	3000	18 5/8	22 1/3	567	17 5/7	450	20 5/8	524	1820	825
20 3/4	3000	20	22 1/3	567	19 1/9	485	20 5/8	524	1772	804
21 1/4	2000	18 5/8	18 5/7	476	17 5/7	450	21 1/8	537	1650	748
21 1/4	2000	20	18 5/7	476	19 1/9	485	21 1/8	537	1570	712
21 1/4	5000	18 5/8	27	686	17 5/7	450	21 1/8	537	5450	2472
21 1/4	5000	20	27	686	19 1/9	485	21 1/8	537	5395	2447

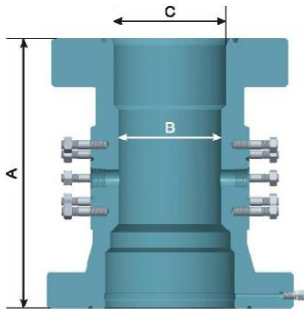
Casing Spool

Casing Spool mainly comprises JCS-22 type and JCS-29, and the two kinds of casing spools are both provided with 45 degree of main bearing shoulder. The lateral outlet can be a thread type and the connecting mode including flange platform type (namely bolt type) and extending flange type, etc. can be supplied according to demands.

The depth of the bearing shoulder of the JCS-29 casing head is bigger than JCS-22, and is applicable to drill deeply after being assembled with the JCG-29 type casing hanger.

The casing spool has a general-purpose straight hole design, and various specifications of slip and mandrel casing spools can be mounted. Symmetrical top threads can be designed for fixing the anti-corrosion sleeve and suspender, the straight hole is designed with a 45 degree of shoulder, the bearing capacity is big, the slip casing hanger and the mandrel type hanger can be exchanged, and the bottom is designed with a BT type or a P type secondary seal mechanism, and on-site installation is adapted for the height of the seal device through the cutting casing.

JCS-22-BP/JCS-29-BP type casing head is provided with additional bolt locking device, and JCS-22-L/JCS-29-L type casing head is provided with the hanger locating locking device.



Basic Parameter

Working pressure: 2000PSI~15000PSI
 Working medium: petroleum, natural gas, mud, gas containing H₂S and CO₂
 Working temperature: - 46 °C ~ 121 °C (LU class)
 Material class: AA, BB, CC, DD, EE, FF, HH
 Specification class: PSL1~4
 Performance class: PR1~2

JCS-22 /JCS-29 Dimension

Bottom flange		Top flange		A		B		C		Weight	
in	psi	in	psi	in	mm	in	mm	in	mm	lbs	kg
11	2000	11	2000	23 1/8	587	10	255	10 7/8	276	600	272
11	2000	11	3000	23 1/8	587	10	255	10 7/8	276	620	281
11	3000	11	3000	23 1/8	587	10	255	10 7/8	276	730	331
11	3000	11	5000	26 1/4	667	9 7/8	251	10 7/8	276	845	383
11	5000	11	5000	26 1/4	667	9 7/8	251	10 7/8	276	1320	599
11	5000	11	10000	31 1/4	793	9 3/4	248	10 7/8	276	1750	793
13 5/8	2000	11	2000	23 1/8	587	10	255	10 7/8	276	710	322
13 5/8	2000	11	3000	23 1/8	587	10	255	10 7/8	276	775	351
13 5/8	2000	13 5/8	2000	23 1/8	587	12 5/8	321	13 1/2	343	860	390
13 5/8	2000	13 5/8	3000	23 1/8	587	12 1/2	318	13 1/2	343	970	440
13 5/8	3000	11	3000	26 1/4	667	10	255	10 7/8	276	795	360
13 5/8	3000	11	5000	26 1/4	667	9 7/8	251	10 7/8	276	1120	508
13 5/8	3000	13 5/8	3000	26 3/4	679	12 1/2	318	13 1/2	343	965	438
13 5/8	3000	13 5/8	5000	26 3/4	679	12 3/8	314	13 1/2	343	1460	662
13 5/8	5000	11	5000	29 3/8	746	9 7/8	251	10 7/8	276	1490	676
13 5/8	5000	11	10000	30 1/4	768	9 3/4	248	10 7/8	276	2010	912
13 5/8	5000	13 5/8	5000	30 1/4	768	12 3/8	314	13 1/2	343	1760	798
13 5/8	5000	13 5/8	10000	30 1/4	768	12 3/8	314	13 1/2	343	2450	1111
13 5/8	10000	11	10000	30 7/8	784	9 3/4	248	10 7/8	276	2950	1338
13 5/8	10000	13 5/8	10000	32 5/8	829	12 3/8	314	13 1/2	343	3900	1769
20 3/4	3000	13 5/8	3000	25 1/4	641	12 1/2	318	13 1/2	343	1960	889
20 3/4	3000	13 5/8	5000	27	689	12 3/8	314	13 1/2	343	2450	1111
20 3/4	3000	20 3/4	3000	27	689	19 1/9	485	20 1/8	511	3070	1392
20 3/4	3000	21 1/4	5000	29 1/4	743	19 1/9	485	20 1/8	511	3320	1506
21 1/4	2000	13 5/8	2000	25 1/4	641	12 5/8	321	13 1/2	343	1885	855
21 1/4	2000	13 5/8	3000	25 1/4	641	12 1/2	318	13 1/2	343	2063	936
21 1/4	5000	13 5/8	5000	27	689	12 3/8	314	13 1/2	343	2580	1170
21 1/4	5000	13 5/8	10000	29 1/4	743	12 3/8	314	13 1/2	343	5235	2374

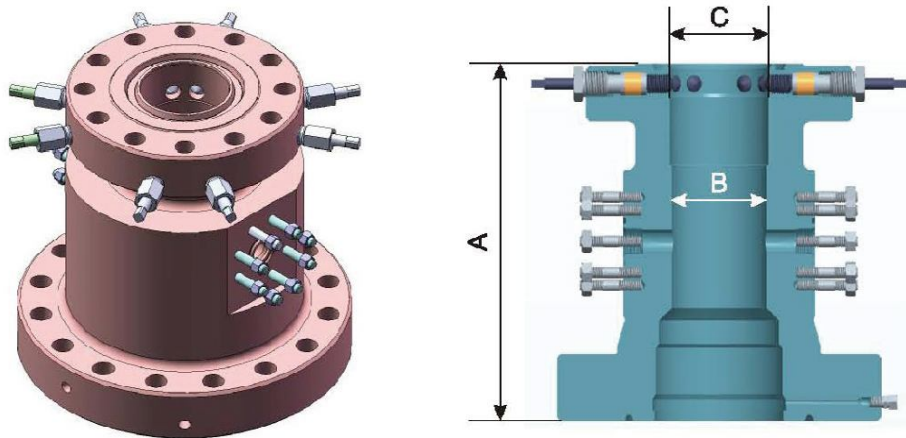
Tubing Head

Tubing head is a product attached to the casing spool, used to suspend the tubing and seal the annulus between the tubing and casing. The tubing head is a necessary component for drilling and completing a well.

JTH tubing head is produced by JF, with straight bore, line pipe or studded side outlets, one or two pin for orientation of the tubing hangers and accepts a wide variety of tubing hanger styles including mandrel and wrap-around. Other option upon request.

Basic Parameter

Working pressure: 2000PSI~15000PSI
 Working medium: petroleum, natural gas, mud, gas containing H₂S and CO₂
 Working temperature: - 46°C~121°C(LU class)
 Material class: AA,BB,CC,DD,EE,FF,HH
 Specification class: PSL1~4
 Performance class: PR1~2



JTH Tubing Head Dimension

Bottom flange		Top flange		A		B		C		Weight	
in	psi	in	psi	in	mm	in	mm	in	mm	lbs	kg
11	2000	7 1/16	2000	18 4/9	469	6 4/9	164	7	178	540	245
11	2000	7 1/16	3000	23 1/8	587	6 3/4	172	7	178	550	249
11	3000	7 1/16	3000	23 1/8	587	6 3/4	172	7	178	600	272
11	3000	7 1/16	5000	26 1/4	667	6 3/4	172	7	178	670	304
11	3000	9	3000	26 1/4	667	8 1/4	210	8 3/4	222	750	340
11	3000	9	5000	26 1/4	667	8 1/4	210	8 3/4	222	800	363
11	5000	7 1/16	5000	26 1/4	667	6 3/4	172	7	178	880	399
11	5000	7 1/16	10000	31 1/4	794	6 3/4	172	7	178	856	388
11	5000	9	10000	31 1/4	794	8 1/4	210	8 3/4	222	1249	567
11	10000	7 1/16	10000	32 5/8	829	6 3/4	172	7	178	1318	598
11	10000	7 1/16	15000	33 1/4	845	6 3/4	172	7	178	1687	765
11	10000	9	10000	32 5/8	829	8 1/4	210	8 3/4	222	1700	771
13 5/8	2000	7 1/16	3000	23 1/8	587	6 3/4	172	7	178	445	202
13 5/8	2000	9	3000	23 1/8	587	8 1/4	210	8 3/4	222	655	297
13 5/8	2000	11	2000	23 1/8	587	10	254	10 7/8	276	1325	601
13 5/8	2000	11	3000	23 1/8	587	10	254	10 7/8	276	1470	666
13 5/8	3000	7 1/16	3000	26 1/4	667	6 3/4	172	7	178	670	304
13 5/8	3000	7 1/16	5000	26 1/4	667	6 3/4	172	7	178	805	365
13 5/8	3000	9	3000	26 1/4	667	8 1/4	210	8 3/4	222	705	320
13 5/8	3000	9	5000	26 3/4	680	8 1/4	210	8 3/4	222	715	324
13 5/8	3000	11	3000	26 1/4	667	10	254	10 7/8	276	1396	633
13 5/8	3000	11	5000	26 1/4	667	10	254	10 7/8	276	1605	728
13 5/8	5000	11	5000	29 3/8	746	10	254	10 7/8	276	1392	631
13 5/8	5000	11	10000	30 1/4	768	10	254	10 7/8	276	1754	796
13 5/8	10000	11	10000	30 7/8	784	10	254	10 7/8	276	3910	1773
13 5/8	10000	11	15000	30 7/8	784	10	254	10 7/8	276	4120	1868
20 3/4	3000	13 5/8	3000	25 1/4	641	12 1/2	318	13 1/2	343	3950	1791
20 3/4	3000	13 5/8	5000	27	686	12 1/2	318	13 1/2	343	4075	1848
21 1/4	2000	13 5/8	2000	25 1/4	641	12 1/2	318	13 1/2	343	3332	1511
21 1/4	2000	13 5/8	3000	27	686	12 1/2	318	13 1/2	343	3466	1572
21 1/4	5000	13 5/8	5000	27	686	12 1/2	318	13 1/2	343	4935	2238
21 1/4	5000	13 5/8	10000	29 1/4	743	12 1/2	318	13 1/2	343	5265	2388

Casing Hanger

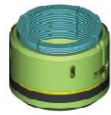
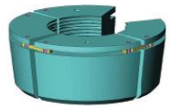
Casing hanger mainly comprises slip and mandrel type, and the slip hanger further comprises a JCG-22 type slip hanger, and a JCG-29 type slip hanger, other option available upon request.

JCG-22 type slip hanger is a ring-shaped hanger consisting of a packer seal ring, a slip and a support bowl, and can be separated. The casing is automatically sealed by the packer ring arranged on the lower portion of the slip due to the gravity function of the casing column after suspending the casing, the inclination of the casing can be reduced through controlling friction force, the installation is convenient and economic.

Compared with a normal hanger, the CG-29 type slip hanger has big bearing capacity and small inclination of casing. When the upper slip is downwards moved and applies pressure to the packer seal ring, the slip on the lower end of the hanger can be automatically geared and controlled the compression volume. Since the lower slip does not move along with the casing, compression force can not be generated as the normal conical slip.

Basic Parameter

Applicable places: applicable to various casing programs
 Working medium: petroleum, natural gas, mud, gas containing H₂S and CO₂
 Experiment pressure: taking 80% of outwards-squeezing resistance of the casing or working pressure, take the lower value
 Working temperature: - 46°C ~ 121°C (LU class)
 Performance class: PR1~2



JCG-22



JCG-29

Tubing Hanger

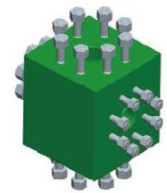
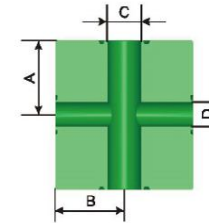
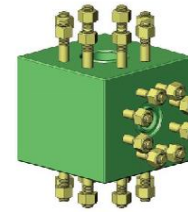
The tubing hanger is sealed by means of squeezing the top threads to trigger rubber, and can be provided with underground safety valve, control pipeline and crossing hole, and various API screw threads or special gas seal screw threads are arranged up and down.

Basic Parameter

Working medium: petroleum, natural gas, mud, gas containing H₂S and CO₂
 Working temperature: - 46°C ~ 121°C (LU class)
 Specification class: PSL1~4
 Performance class: PR1~2



Tee and Cross

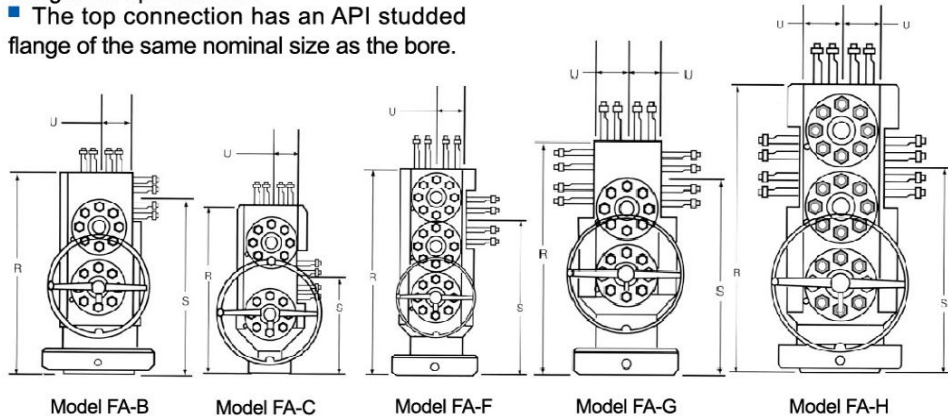


Chamel Specification		Outlet Specification		A		B		C		D		Weight	
in	psi	in	psi	in	mm	in	mm	in	mm	in	mm	tee(lbs/kg)	cross(lbs/kg)
2 1/16	2000	2 1/16	2000	3 1/2	89	3 1/2	89	2 1/9	52	2 1/9	52	95/43	85/39
2 1/16	5000	2 1/16	5000	4 1/2	114	4 1/2	114	2 1/9	52	2 1/9	52	160/73	160/73
2 9/16	2000	2 9/16	2000	4 1/2	114	4 1/2	114	2 5/9	65	2 5/9	65	125/57	119/54
2 9/16	5000	2 1/16	5000	4 1/2	114	5	127	2 5/9	65	2 1/9	52	375/170	255/116
2 9/16	5000	2 9/16	5000	5	127	5	127	2 5/9	65	2 5/9	65	350/159	225/102
3 1/8	2000	3 1/8	2000	4 1/2	114	4 1/2	114	3 1/8	79	3 1/8	79	198/90	185/84
3 1/8	3000	2 1/16	5000	4 1/2	114	5	127	3 1/8	79	2 1/9	52	264/120	231/105
3 1/8	3000	2 9/16	5000	5	127	5	127	3 1/8	79	2 5/9	65	350/159	275/125
3 1/8	3000	3 1/8	3000	5	127	5	127	3 1/8	79	3 1/8	79	264/120	271/123
3 1/8	5000	2 1/16	5000	4 1/2	114	5 1/2	140	3 1/8	79	2 1/9	52	164/120	295/134
3 1/8	5000	2 9/16	5000	5 1/2	140	5 1/2	140	3 1/8	79	2 5/9	65	364/165	310/141
3 1/8	5000	3 1/8	5000	5 1/2	140	5 1/2	140	3 1/8	79	3 1/8	79	414/188	321/146
4 1/16	2000	4 1/16	2000	5 1/2	140	5 1/2	140	4 1/9	103	4 1/9	103	405/184	354/161
4 1/16	3000	3 1/8	3000	5	127	6 1/8	155	4 1/9	103	3 1/8	79	451/205	435/197
4 1/16	3000	4 1/16	3000	6 1/8	155	6 1/8	155	4 1/9	103	4 1/9	103	495/225	451/205
4 1/16	5000	2 9/16	5000	5	127	6 1/2	165	4 1/9	103	2 5/9	65	447/203	425/193
4 1/16	5000	3 1/8	5000	5 1/2	140	6 1/2	165	4 1/9	103	3 1/8	79	488/221	425/193
4 1/16	5000	4 1/16	5000	6 1/2	165	6 1/2	165	4 1/9	103	4 1/9	103	565/256	486/220
1 13/16	10000	1 13/16	10000	4 3/8	111	4 3/8	111	1 4/5	46	1 4/5	46	191/87	187/85
1 13/16	15000	1 13/16	15000	5	127	5	127	1 4/5	46	1 4/5	46	257/117	253/115
2 1/16	10000	1 13/16	10000	4 3/8	111	4 3/8	111	2 1/9	52	1 4/5	46	191/87	187/85
2 1/16	10000	2 1/16	10000	4 3/8	111	4 3/8	111	2 1/9	52	2 1/9	52	191/87	187/85
2 1/16	15000	1 13/16	15000	5	127	5	127	2 1/9	52	1 4/5	46	257/117	253/115
2 1/16	15000	2 1/16	15000	5	127	5	127	2 1/9	52	2 1/9	52	257/117	253/115
2 9/16	10000	1 13/16	10000	4 1/2	114	5 1/8	130	2 5/9	65	1 4/5	46	246/112	241/109
2 9/16	10000	2 1/16	10000	4 1/2	114	5 1/8	130	2 5/9	65	2 1/9	52	246/112	241/109
2 9/16	10000	2 9/16	10000	5 1/8	130	5 1/8	130	2 5/9	65	2 5/9	65	286/130	280/127
2 9/16	15000	1 13/16	15000	5 1/2	140	5 1/2	140	2 5/9	65	1 4/5	46	386/175	307/139
2 9/16	15000	2 1/16	15000	5 1/2	140	5 1/2	140	2 5/9	65	2 1/9	52	389/176	350/159
2 9/16	15000	2 9/16	15000	5 1/2	140	5 1/2	140	2 5/9	65	2 5/9	65	375/170	335/152
3 1/16	10000	1 13/16	10000	4 1/2	114	5 7/8	149	3 1/9	78	1 4/5	46	370/168	350/159
3 1/16	10000	2 1/16	10000	4 1/2	114	5 7/8	149	3 1/9	78	2 1/9	52	370/168	350/159
3 1/16	10000	2 9/16	10000	5 1/8	130	5 7/8	149	3 1/9	78	2 5/9	65	407/185	433/196
3 1/16	10000	3 1/16	10000	5 7/8	149	5 7/8	149	3 1/9	78	3 1/9	78	480/218	464/210
3 1/16	15000	1 13/16	15000	6 1/3	160	6 1/3	160	3 1/9	78	1 4/5	46	486/220	470/213
3 1/16	15000	2 1/16	15000	6 1/3	160	6 1/3	160	3 1/9	78	2 1/9	52	470/213	440/159
3 1/16	15000	2 9/16	15000	6 1/3	160	6 1/3	160	3 1/9	78	2 5/9	65	440/200	432/196
3 1/16	15000	3 1/16	15000	6 1/3	160	6 1/3	160	3 1/9	78	3 1/9	78	430/195	422/191

Single-String Solid-Block Cross Valve

- The bottom flange provides a compact and strong connection ahead of the master valve.
- The bottom has either a bushing suspension preparation for an HBA tubing hanger as standard or a seal pocket preparation for an extended neck FBB tubing hanger on special order
- The top connection has an API studded flange of the same nominal size as the bore.

- The second master valve equipped With the actuator can be qualified for application API monogram.
- The valve has a forged body.
- Control line ports can be supplied on request.

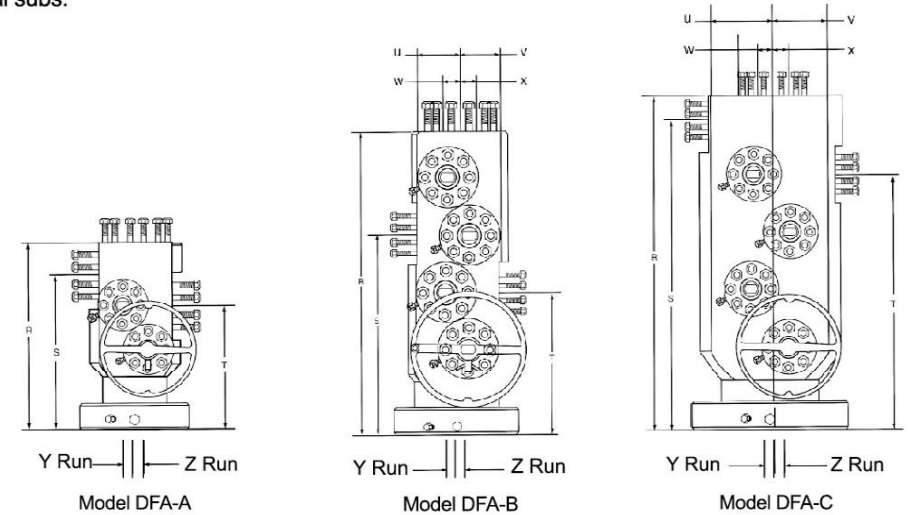


Run		Style	Bottom Flange		Master Valves		Top Connection		Side Outlets		Dimensional Date(inch)		
inch	psi		inch	psi	inch	psi	inch	psi	inch	psi	R	U	S
2 1/16	10000	FA-B	7 1/16	10000	2 1/16	10000	2 1/16	10000	13/16	10000	31 1/16	5 1/4	27 1/4
2 1/16	15000	FA-B	7 1/16	15000	2 1/16	15000	2 1/16	15000	13/16	15000	32 1/8	5 1/2	28
2 9/16	10000	FA-B	7 1/16	10000	2 5/9	10000	2 5/9	10000	13/16	10000	32 5/8	5 1/2	28 1/2
3 1/8	5000	FA-C	7 1/16	5000	3 1/8	5000	3 1/8	5000	2 1/16	5000	32 1/4	5 5/8	27 1/2
3 1/8	10000	FA-C	9	5000	3 1/8	5000	3 1/8	5000	2 1/16	5000	32 1/4	5 5/8	27 1/2
3 1/16	10000	FA-F	2 9/16	10000	3 1/16	10000	3 1/16	10000	2 1/16	10000	33 1/4	6 3/8	29 7/16
2 1/16	3000	FA-F	2 1/16	10000	3 1/16	10000	3 1/16	10000	13/16	10000	29 1/16	4 11/16	17
2 9/16	5000	FA-G	7 1/16	3000	2 1/16	5000	2 9/16	5000	2 1/16	5000	26 5/8	4 7/8	18 1/16
2 9/16	5000	FA-G	2 9/16	5000	2 9/16	5000	2 9/16	5000	2 1/16	5000	23 1/2	4 7/8	14 13/16
2 9/16	5000	FA-G	2 9/16	5000	2 9/16	5000	2 9/16	5000	2 1/16	5000	35 1/2	4 7/8	26 3/4
3 1/8	5000	FA-H	7 1/16	5000	3 1/8	5000	3 1/8	5000	3 1/8	5000	34	5	27 3/4
4 1/16	10000	FA-G	9	10000	4 1/16	10000	4 1/16	10000	4 1/16	10000	49 1/2	7 5/16	35 1/2

Dual-String Solid-Block Cross Valve

- The bottom flange fits the hanger spool or the dual-string solid-block master valve.
- All side outlets are studded.
- The top connections are studded and grooved to receive API segmented flanges.
- The bottom is counter bored to fit over the seal necks of the tubing hanger, or individual seal subs.

- On special order, the bottom can be prepared to fit certain wellhead equipment of other manufacturers (subject to securing any necessary license).
- The valve has a forged body.
- Control line ports can be supplied on request.



Bore Size (inch)	Center Spacing (inch)			Working Pressure (psi)	Style	Bottom		Master Valves		Outlets		Top Connections		R	S	T	U	V				
	Y	Z	W+X			W	X	inch	psi	Y (inch)	Y (psi)	Z (inch)	Z (psi)	inch	psi	inch	psi	Bolt	inch	inch	inch	inch
2 1/16	2 1/16	3 35/36	1 75/97	1 75/97	5000	FA	7 1/16	5000	2 1/16	5000	2 1/16	5000	2 1/16	5000	2	5000	5	27	22 1/4	18	5 1/4	5 1/4
2 1/16	2 1/16	3 35/36	1 76/77	1 13/20	5000	FA	7 1/16	5000	2 1/16	5000	2 1/16	5000	2 1/16	5000	7 1/16	5000		28 1/4	21 7/8	18 5/8	5 7/8	5 7/8
2 1/16	2 1/16	3 35/36	1 75/97	1 75/97	15000	FA	7 1/16	5000	2 1/16	5000	2 1/16	5000	2 13/16	15000	2	15000	5	49 1/4	32 1/8	23 1/2	6 1/2	6 1/2
2 1/16	2 1/16	3 35/36	1 76/77	1 13/20	5000	FA	7 1/16	5000	2 9/16	5000	2 9/16	5000	2 9/16	5000				42 1/2	38 1/8	32 7/8	5 7/8	5 7/8
2 9/16	2 9/16	4 1/2	4 1/2	4 1/2	10000	FA	9	10000	2 9/16	10000	2 9/16	10000	2 13/16	10000	9 1/16	10000	6	48	43 1/4	34 1/2	7 1/2	7 1/2

其他产品:
Other Parts

